



CDAnywhere

DVD / CD Network Storage Server

Quick Start Guide

www.cuttedge.com
(800) 257-1666

CDAnywhere Quick Start Guide

What is CDAnywhere?

The CDAnywhere server allows you to mirror – or cache – multiple CDs and DVDs onto this centralized storage unit for access from multiple users across the network. The cached DVD/CD appears as a subdirectory of the main storage that can be reached from network workstations. The CDAnywhere is designed for optimal performance based upon the EdgeWare™ OS

What is the EdgeWare™ OS?

EdgeWare is a storage-centric operating system that delivers high performance with data protection and utilizes a web-based interface that guides the user through easy to follow menus for efficient data and network management.

To complete a successful CDAnywhere installation, we recommend that you follow these five steps:

Step 1: Connect the CD Anywhere server into a Windows Networked Environment.

Step 2: Find the CD Anywhere Server with the Magellan Client.

Step 3: Cache CD/DVD.

Step 4: Map Network Drive.

Step 5: Access Cached CDs from Network Station.

Step 1: Connect the CDAnywhere Server in a Windows Environment

Connect the CDAnywhere server to an Ethernet network. For optimal performance, we recommend connecting the CDAnywhere server to a gigabit Ethernet switch. Connect the power cable and turn the CDAnywhere server on by depressing the power button on the front of the unit. Wait 5 minutes to allow the EdgeWare operating system to fully load and connect to the network.

Step 2: Finding the CDAnywhere Server with the Magellan Client

“Magellan” is a network discovery tool that searches for CDAnywhere units on your network and finds its name and IP address. With the Magellan client you can obtain access to the EdgeWare OS where you can modify and apply changes to the CDAnywhere server.

Installing the Magellan Client in a Windows Environment

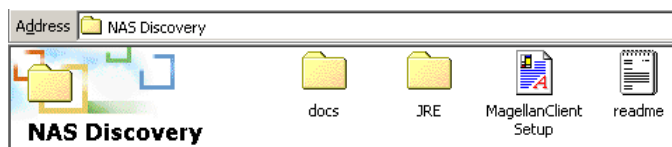
To find the CDAnywhere server on your network, you must install the Magellan client in each workstation connected to your network. Each individual workstation needs to have the Magellan Client installed to be able to access the CDAnywhere server and cache CDs or DVDs.

CD Anywhere Quick Start Guide

Path A: Insert the EdgeWare Discovery Tools and User Guide CD into your computer. At your desktop, double-click on the “My Computer” icon and double-click on the CD drive.

Path B: You will see a list of different folders, double-click on the NAS discovery folder and then double-click on the Magellan Client Setup icon.

NOTE: If your computer does not have a Java-based client, you can install one by opening the JRE folder (see graphic below) and double-click on the “j2re” application.



Path C: Follow the instruction wizard to install the Magellan client correctly.

Path D: When installation is complete, go to your local hard drive and double-click on it. Look for the “MagellanClient” folder, open it, and double-click on the application program named “MagellanClient.”



Path E: A new window will appear. To find the CDAnywhere server on your network, click on the “Search” button.

Path F: After clicking on the search button, the Magellan client will populate the “Discovered NAS Servers” table (see image above) with the CDAnywhere server connected to the network. You can identify your CDA server by looking for the serial number which is located on the back of your unit. The serial number begins with CE and six digits, for instance “CE3D8DD8.” The serial number of your CDA server is displayed under the “Host Name” column.

CD Anywhere Quick Start Guide



Path G: Enter the following default log in information in the user interface.

- User Name: **admin**
- Password: **setup**

NOTE: If you need to change your settings, we suggest you bookmark this page to your Internet browser.

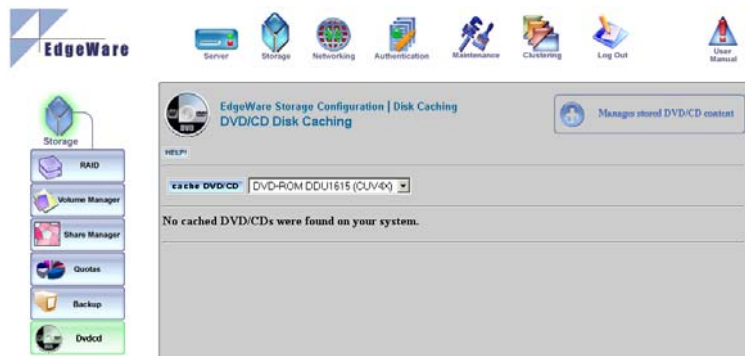
Step 3: Caching CD/DVD

Path A: At the CDAnywhere unit, insert the CD or DVD you want cached into the CD/DVD tray.

Path B: In the EdgeWare user interface, select the “storage” icon at the top left menu choices



Path C: Now select the DVD/CD menu icon located at the bottom left of the screen.



CDAnywhere Quick Start Guide

Path D: Clicking on this menu will bring up the management page for this module. The drop down menu with the cache DVD/CD heading will contain the devices to be used to cache CDs or DVD (in this case, there will be only one selected by default).

Note: If you have opened the page and the drop down list is empty, eject and then re-insert the CD/DVD from the CDAnywhere unit. Click on the reload button of your Internet browser to reload the page.

Path E: Click on the button “cache DVD/CD.” This will bring up the options page. There you have the following options:

Cache Repository: This shows a list of available volumes for the user to select from. The repository is the place where the cached CDs/DVDs are stored.

Disk Image: The name of the cached file. By default the name is the CD label name with ‘.img’ extension (spaces are replaced by underscore). When changing the image name, do not use the same name of an already existing image. For all cached images, the image name is listed under the “Cached Label” column.

Directory in Share: Allows the user to select where to place the directory where the images are mounted. The selected share is usually mounted as Network drive, the cached CDs/DVDs will be its subdirectories

Share Directory: This is the directory where the cached image is mounted. It is a subdirectory of the one selected in the previous option. When selecting a directory name, do not use the name of an existing directory. For cached images, the directory where the image is mounted and listed, can be found under the “Cached Directory” column.

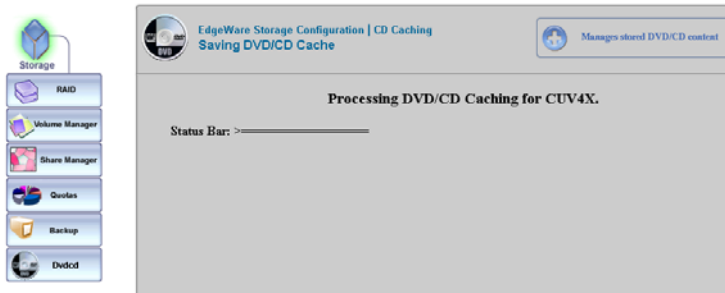
The screenshot shows the EdgeWare Storage Configuration interface for DVD/CD Caching. The interface includes a navigation menu on the left with options like RAID, Volume Manager, Share Manager, Quotas, Backup, and Dvdcd. The main content area displays the following information:

- Size of inserted disc: 1.5MB
- Free space left for caching disc: 373GB
- Select an Action: Create New Cache (highlighted)
- Inserted DVD/CD Label: EDGEWAREHOUSE
- DVD/CD Drive: DVD-ROM DDU1615
- Cached Filename: EDGEWAREHOUSE.img
- Directory in Share: /shares/cdshare
- Cache Repository: /Volumes/LVdcache
- Share Directory: EDGEWAREHOUSE
- Checkbox: DVD/CD Contents will be Updated Later?
- Characters to Match Against Future DVD/CD Labels: EDGEWAREHOUSE
- Buttons: save, delete, return to index

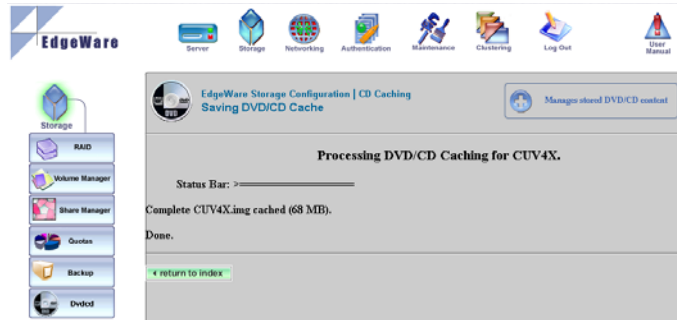
CDAnywhere Quick Start Guide

Note: Each image is given unique name and unique directory, different than the ones previously created. Usually the default settings are sufficient to ensure this.

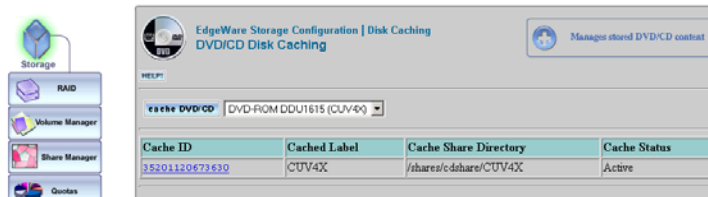
Path F: To begin caching a CD/DVD click on the “save” button. This will start the caching displaying the progress. Wait until “Done” is displayed at the bottom of the screen.



Note: Do not cancel the process once started, either by reloading the page or switching to another page.



Path G: When caching process is complete, click on the “return to index” button to go back to the main page. If the process was completed successfully, the newly created image should be shown under the “Cache ID” column.



CDAnywhere Quick Start Guide

Path H: To apply changes or delete an image, click on the number assigned to the image, which can be found under the “Cached ID” column.

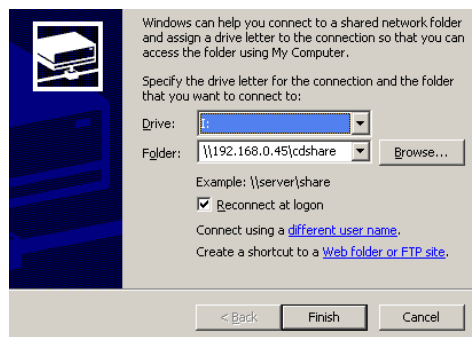
Step 4: Map Network Drive

For each workstation on the local network that you want to access the CDAnywhere server, you need to perform the following steps:

- In your computer, double-click on the “My Computer” icon and double-click on the “Tools” option on the menu bar and select “Map Network Drive”.



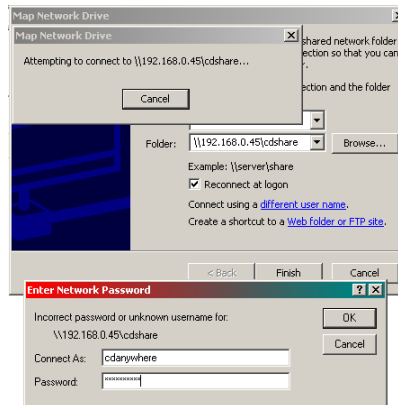
- Select the drive letter that you wish to assign the CDAnywhere server. For the folder name enter the IP address of the server and type “cdshare.” For example: `\\192.168.0.45\cdshare` and click on “Finish” button.



A new window will appear that requests user name and password, please enter the following:

- User Name: **cdanywhere**
- Password: **cdanywhere**

CDAnywhere Quick Start Guide



Congratulations! You are now setup and ready to use the CDAnywhere

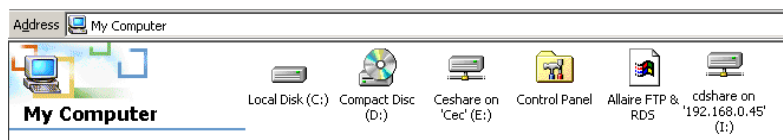
Step 5: Access Cached CDs from Network Workstation:

To access the cached CDs, you must do the following:

- In your desktop, double-click on the “My Computer” Icon



- A new window will open. You will see the CDAnywhere server as the drive you specified, in this case as the (I:) drive. Double-click on the drive and you will see the data cached from the CD or DVD.



EdgeWare NAS: Mapping a Network Share

Note: The CDA can be used as a dual purpose storage appliance. It can be implemented as a network attached storage (NAS) device where you can add files to a network share. This option can be applied by users who have cached all their CDs/DVDs and have additional storage space remaining. However, using this additional storage will limit the amount of CDs/DVDs that can be cached.

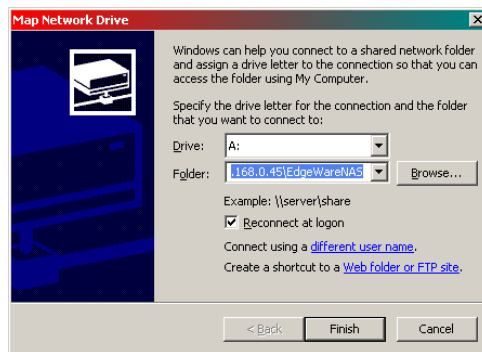
CDAnywhere Quick Start Guide

To create a network share on the local network, you need to perform the following steps:

- In your computer, double-click on the “My Computer” icon and double-click on the “Tools” option on the menu bar and select “Map Network Drive”.



- Select the drive letter that you wish to assign the EdgeWareNAS. For the folder name enter the IP address of the server and type “EdgeWareNAS” For example: `\\192.168.0.45\EdgeWareNAS` and click on “Finish” button.



CDAnywhere Capabilities

With the CDAnywhere server you have the flexibility to store hundreds of CDs or DVDs in a centralized storage location allowing users to access the stored information in the network from multiple locations. The CDAnywhere server can be used in educational institutions, libraries, and inventory management.

The CDAnywhere server allows you to quickly retrieve news articles, medical journals, or inventory part numbers from the convenience of your desktop.