



## **Quick Start**

# **Installation Guide**

## **Locating the Blaze Server with the Magellan Client**

**[www.cuttedge.com](http://www.cuttedge.com)  
(800) 257-1666**

## Quick Start Guide

---

### What is Magellan?

“Magellan” is a network discovery tool that searches for an EdgeWare™ server within networks and finds the server’s name and IP address. With the Magellan client you can obtain access to the EdgeWare Operating System (OS) where you can configure and modify system settings.

Understanding Magellan consists of two parts:

- ◆ **Installing the Magellan Client**
- ◆ **Additional Configuration Settings**

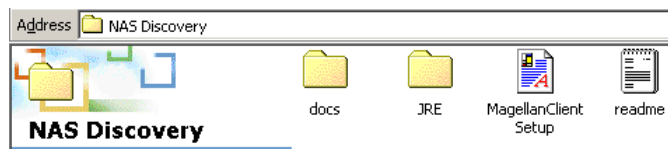
### Installing the Magellan Client in a Windows Environment

To find an EdgeWare server on your network, you must install the Magellan client in the network administrator’s workstation.

Step A: Insert the EdgeWare Discovery Tools and User Guide CD into your workstation. At your desktop, double-click on the “My Computer” icon and double-click on the CD drive icon.

Step B: You will see a list of different folders. Double-click on the NAS discovery folder and then double-click on the Magellan Client Setup icon (see image 1).

#### Image 1

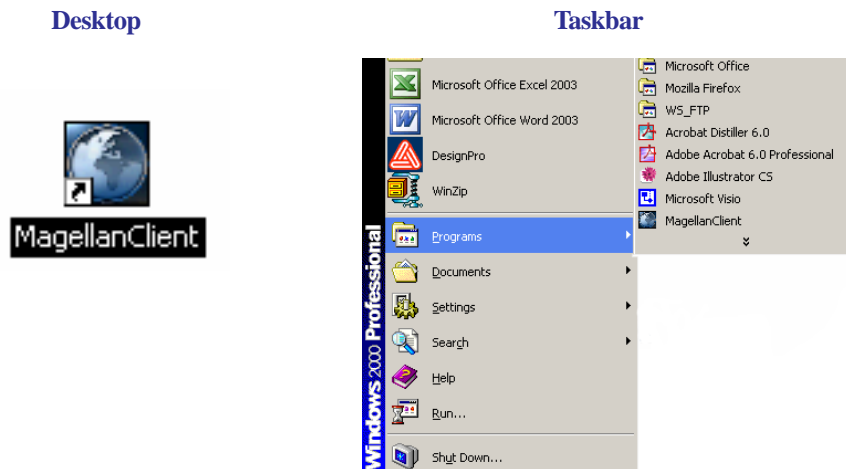


**NOTE:** If your computer is not Java enabled, you can install the Java Runtime Engine by opening the JRE folder (see image 1) and double-clicking on the “*j2re*” application.

Step C: Follow the instruction wizard to install the Magellan client correctly.

**Important:** When the installation is completed, you can open the application by double-clicking on the “MagellanClient” icon found on your desktop or in the Windows taskbar by clicking “Start,” then “Programs,” and click on the “MagellanClient” icon (see desktop and taskbar images on the next page ).

## Quick Start Guide



Step D: To identify where in your computer where the Magellan Client is installed, go to your local hard drive and double-click on it. Look for the “MagellanClient” folder, open it, and double-click on the application program named “MagellanClient” (see images 2 and 3).

Image 2

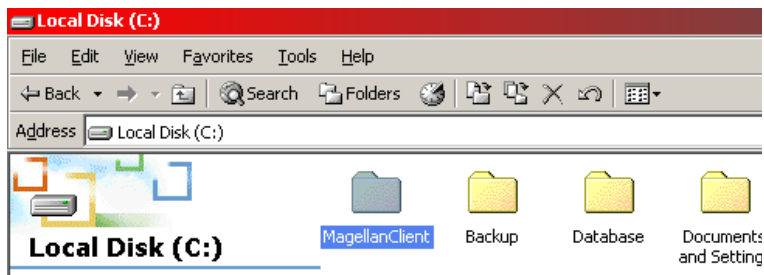
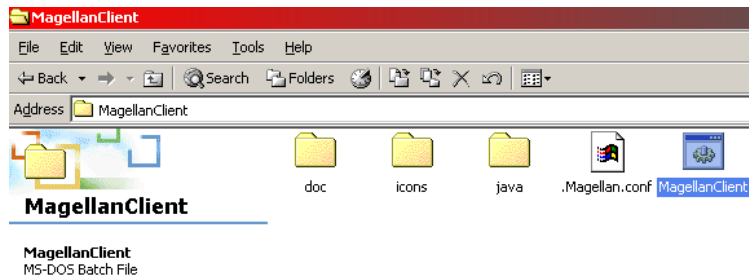


Image 3

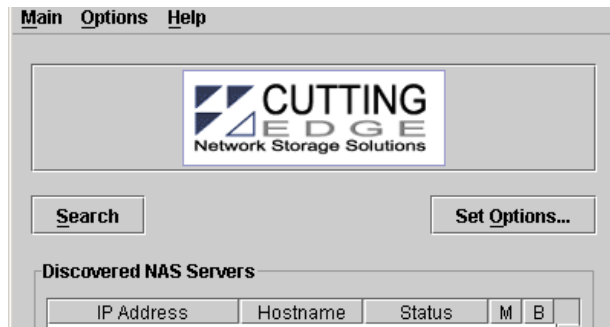


## Quick Start Guide

---

Step E: When double-clicking in the the Magellan Client icon, the user interface (UI) will appear. To find the EdgeWare server on your network, click on the “Search” button (see image 4).

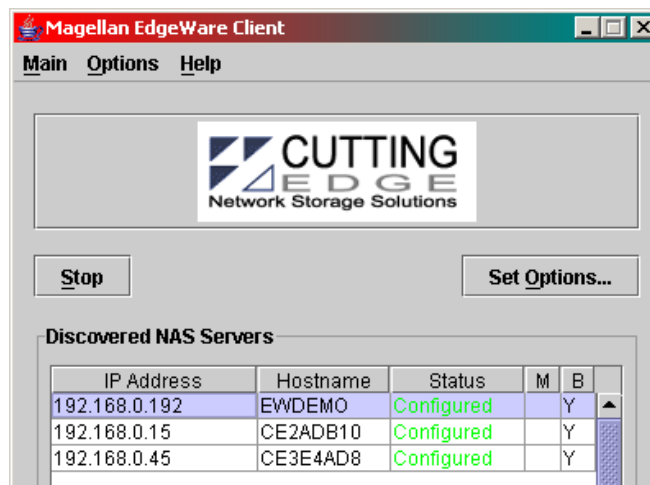
**Image 4**



Step F: After clicking on the search button, the table below (see image 5) will populate with any of the EdgeWare servers connected to the network. You can identify your EdgeWare server by looking for the serial number which is located on the back of your EdgeWare server. The serial number begins with CE and six digits, for instance “CE2ADB10.” Note that the serial number of your server can be found under the “Host Name” column.

**NOTE:** For information of how to obtain access and configure the EdgeWare OS, please refer to the EdgeWare configuration guide.

**Image 5**



---

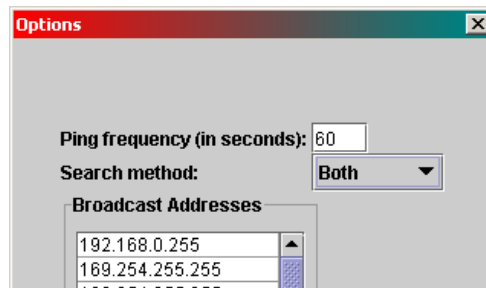
## Quick Start Guide

---

### Additional Configuration Settings

The Magellan Client comes pre-configured to look for EdgeWare servers in the Broadcast subnet. However, if you need to modify these setting, click on the “Set Options” button (see image 5 above). A new window will pop up. This allows you select your search method preference by clicking on the drop down menu (see images 6 and 7).

**Image 6**



**Broadcast:** The Broadcast method searches for EdgeWare servers on all the broadcast subnets. You can expand the search by entering additional subnets under the “Broadcast Addresses” column (see image 7) and click on save.

**Image 7**

